



**WRONA IMPORTS**



**SECTIONAL** GARAGE DOORS



# SECTIONAL GARAGE DOORS

Garage doors consist of several basic elements. Those are:

- gate coat (panels)
- vertical and horizontal guides
- springs
- electric drive

These elements are available in several different variants, which allows us to create many configurations of INFINITI sectional doors tailored to the customer's preferences. We can individually select solutions depending on the lintel height, garage depth and type of drive. Panels that can be varnished or glued and made of various applications made of stainless steel (INOX) give great personalization options.

We present all these possibilities in the All in One Design collection.



SPRINGTYPE

## TENSION - X

Tension springs are recommended for installation in small garages. Installation of doors with tension springs is extremely fast and does not require special winding of the springs. A mechanism of two springs is used here (the so-called „spring in a spring“), which allows the armor to bear a weight of up to about 120 kg.



SPRING TYPE

## TORSION AT THE FRONT - F

Torsion springs are dedicated to large-size gates. They will lift much more weight than the tension springs. Installation of doors with torsion springs at the front is possible when the lintel height is at least 200 mm. The maximum weight of the garage door is about 195 kg.





SPRINGTYPE

## TORSION AT THE REAR - R

The location of the torsion springs in the rear part of the door allows it to be mounted to the garage opening with a lower lintel. In this case, it is sufficient for the lintel to be 85 mm (115 mm for an electric drive). Maximum lifting capacity up to approx. 195 kg.



## LIST OF BASIC PARAMETERS

INFINITI garage door (springs)	max. door surface	max. door weight	max. lintel height*	min. nib width	min building depth without the drive	min building depth with electric drive
	[m <sup>2</sup> ]	[kg]	[mm]	[mm]	[mm]	[mm]
tension	9	120	120	85	H + 579	for garage door height up to 2250 mm - 3150 mm;
torsion at the front	15	195	200	85	H + 575	for garage door height up to 2750 mm - 3750 mm;
torsion at the rear	12,5	195	120	85	H + 695	for garage door height up to 3000 mm - 4750 mm.

\* applies to garage doors with drives

## ADDITIONAL SOLUTIONS FOR SECTIONAL DOORS

INFINITI garage doors (springs)	glazing (INOX and PVC)	aluminum section	INOX application	service doors
tension	●	●	●	● only in the middle
torsion at the front	●	●	●	●
torsion at the rear	●	●	●	●



## **EQUIPMENT** PACKAGES

Our motto is to fulfill the client's expectations. That is why we have introduced INFINITI door equipment packages to our offer. These activities allowed us to be fully compatible with window and door joinery. INFINITI packages solutions were also created with a view to greater anti-burglary protection and protection against noise.



**QUIET**  
**INFINITI**

Silence... with the INIFINITI Quiet package!

- Gate operation is smooth and quiet.
- Aesthetics and functionality at the highest level.
- The gate is compatible with other noise-proofing joinery.
- Comfort for the most demanding customers
- Minimized noise of the working gate.





**SAFE**  
**INFINITI**

Safety is ensured by the INFINITI Safe package!

- Optimum security for all members of the household and your car.
- Ensuring work in the event of power cuts.
- Adaptation of the garage door to the joinery equipped with elements which increased security class.
- Dedicated anti-theft security.



Premium only with INFINITI Premium package!

- Complete equipment for a quiet and safe gate.
- Satisfying the values of design and aesthetics.
- Minimized noise of the running garage door.
- Guarantee of safety for the residents of the house.



Cheaper in the package!



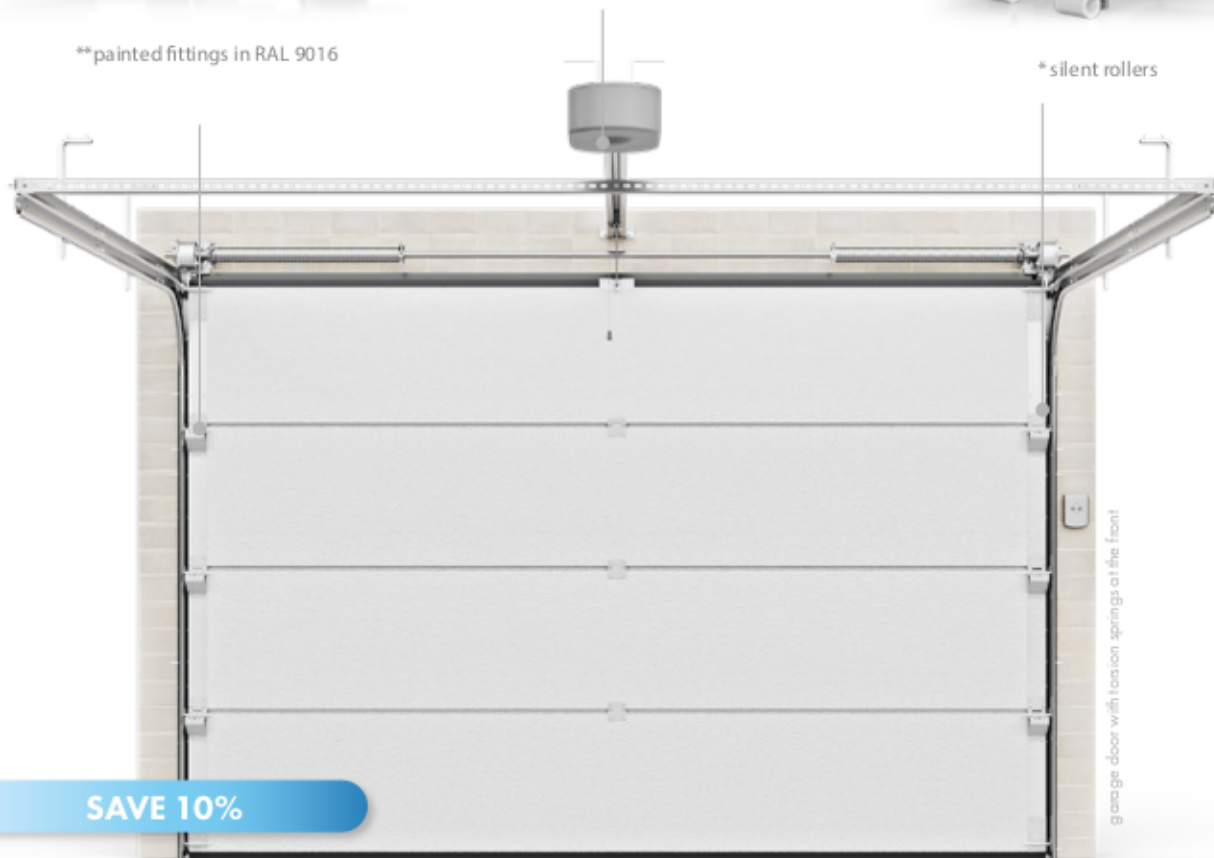
\*\*painted fittings in RAL 9016



rail with strap



\* silent rollers



SAVE 10%

garage door with tension springs at the front

CAME  somfy.

INFINITI Quiet Package available with Somfy and Came drives

\* Quiet rollers - for side hinges. \*\* Painted fittings - color RAL 9016, in the garage door with tension springs, the upper handles with rollers are silver, galvanized.



### DISCOUNT FOR ACCESSORIES - 10%

- silent rollers,
- rail with strap,
- painted fittings in RAL 9016.



### DISCOUNT FOR ACCESSORIES - 10%

- emergency opening battery,
- mechanical lock of the truck,
- photocells.



### DISCOUNT FOR ACCESSORIES - 15%

- emergency opening battery,
- mechanical lock of the truck,
- photocells,
- rail with strap,
- silent rollers.





# INDUSTRIAL SECTIONAL GARAGE DOORS

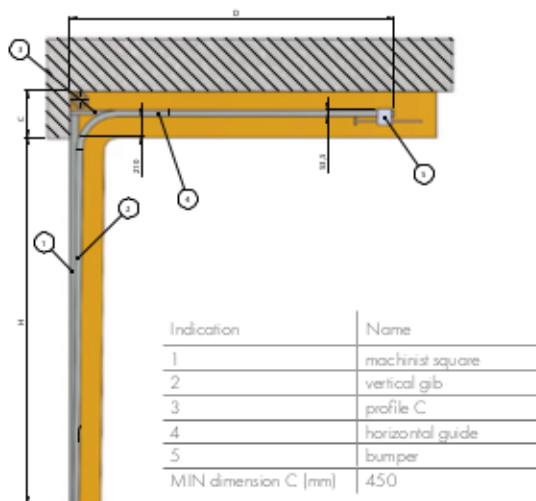
Industrial sectional doors are designed for facilities such as:

- warehouses,
- production facilities,
- workshops,
- services,
- garages of multi-family buildings.

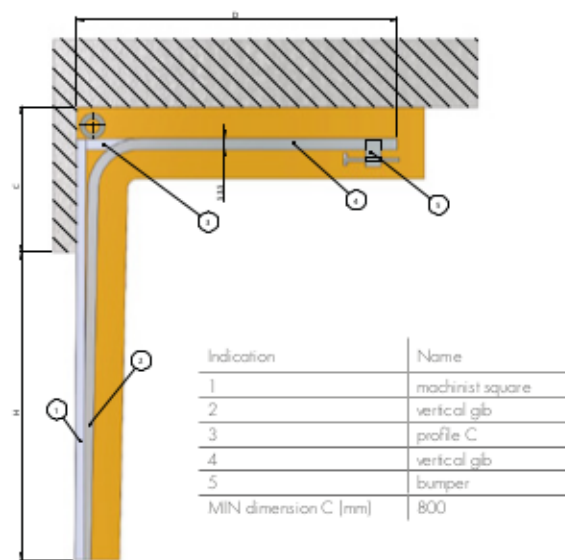
Industrial doors differ from garage doors mainly in the size and type of components used. They are specially designed for very heavy use. They use springs with a longer life, while the side motors have increased operating parameters. Thanks to the use of appropriately selected materials, the structure of the gate is durable and the accessories (including drives, springs, accessories) are adapted to the demanding conditions in which industrial gates operate. Each of the industrial doors can be additionally equipped with a service door, an aluminum section or glazing (with PVC frames).



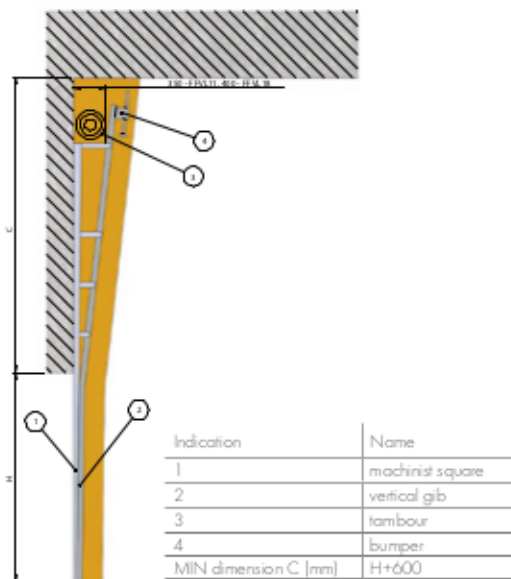
### STANDARD SYSTEM NL



### HIGH SYSTEM HL



### VERTICAL SYSTEM VL



### ASSEMBLY DIMENSIONS

		Industrial garage doors with torsion springs
type of drive		manual or electric
min. nib width	min. A, B [mm]	250 from the drive side and 120
minimal/recommended lintel height	min. C [mm]	- STANDARD NL - 450 - HIGHER HL - 800 - VERTICAL VL - H+600 - STANDARD SLOPE FTR from 520 - HIGHER SLOPE FHL from 680
min. building depth with an electric drive	[mm]	H + 750







## PANEL TYPES



Woodgrain panel smooth, with low and high embossing



smooth panel, with low and high embossing

## SAMPLE RAL COLORS ON PANELS



RAL 9005



RAL 7016



RAL 9016



RAL 9006



RAL 8014



RAL 3001

All RAL colors are available in the offer.

## EXAMPLES OF VENEER COLORS ON THE PANELS



anthracite AP40



sand anthracite gray AP60



golden oak AP23



Winchester AP95



dark oak AP06



sand gray AP61

The panels are available in colors from the RAL palette and veneers used in Salamander, Aluplast and Gealan window profiles.











**SOMFY KEYTIS 2 RTS**

2-channel remote control



**SOMFY KEYTIS 4**

4-channel remote control



**SOMFY KEYGO 4 io**

4-channel remote control io



**SOMFY KEYGO 4 RTS**

2-channel remote control RTS



**METAL WIRELESS  
CODE KEYPAD RTS**

2-channel keyboard



**METAL WIRELESS  
RADIO KEYPAD io**



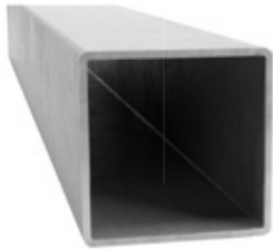
**WALL TRANSMITTER  
RTS**

2-channel transmitter



**WIRELESS CODE  
KEYPAD RTS**

2-channel keyboard



### RENOVATION PROFILE

100 x 40 x 2 mm  
50 x 40 x 2 mm



### COVERING PROFILES

65 mm (413903)  
85 mm (413904)



### ALUMINUM SECTION

color anode or painted acc. RAL



### HANDLE IN ABS

double-sided, black



### TENSION RODS

for torsion springs (2 pcs.)



### EMERGENCY RELEASE

to the gate operator



### SIDE SLIP



### BATTERY

the battery allows the drive to work during a power failure 5-10 work cycles within 24 hours, depending on the characteristics







## ALL IN ONE DESIGN - A NEW DEFINITION OF STYLE

Developed for customers with the most sophisticated tastes and for those who, when designing a house, pay attention to every, even the smallest detail. The aesthetic line of products „All in One Design“ saves not only the time needed to choose the woodwork, but above all guarantees a harmonious appearance of windows, doors, gates, and roller shutters. It is also the certainty of complete technological compliance and convenience, which is undoubtedly the possibility of ordering all joinery elements from one manufacturer. We offer „All in One Design“ solutions in both PVC and aluminum joinery, adapting to the customer's needs.

Among the compositions prepared by us, there are both those more subdued, recommended for traditional construction, as well as those distinguished by colors and decorations, which will be perfect for modern architecture.

It is no coincidence that the names of individual compositions refer to the names of Italian cities. Italians are known primarily for their love of art and fashion as well as their extraordinary sense of aesthetics. The „All in one Design“ product line is the most fashionable colors, bold combinations of materials and decorations. It is also the highest quality of workmanship and the possibility of choosing a product. The customer chooses a window system, roller shutter, door type and gate, and leaves their arrangement in our hands.

When you reach for products from the „All in One Design“ line, you can be sure that the façade will gain a coherent, „tailored“ image after installing the joinery.



FIRENZE



FOGGIA



TRIESTE



MESSINA



MODENA



TORINO



LIVORNO



VERONA





17





## ALL IN ONE CONTROL - EVERYTHING IN YOUR HANDS

When developing the "All in One Control" product line, we focused on making our joinery part of a smart home. The technologies we propose facilitate home management, while ensuring the highest comfort and safety.

Control is a set of drives, transmitters and control units that interact with each other and allow you to freely control roller shutters, gate, door, alarm and even lighting. After connecting to Tahoma Premium, the user will be able to control them using any device with Wi-Fi access, as well as the IOS or Android operating system, such as a tablet, smartphone, smartwatch or laptop.

By choosing products from the „All in One Control“ product line, customers can be sure of complete technological compliance. The customer chooses the products and we will refine all the automation elements with which they are to be equipped. When completing the devices, we only use the best solutions of a recognized European manufacturer, Somfy.



